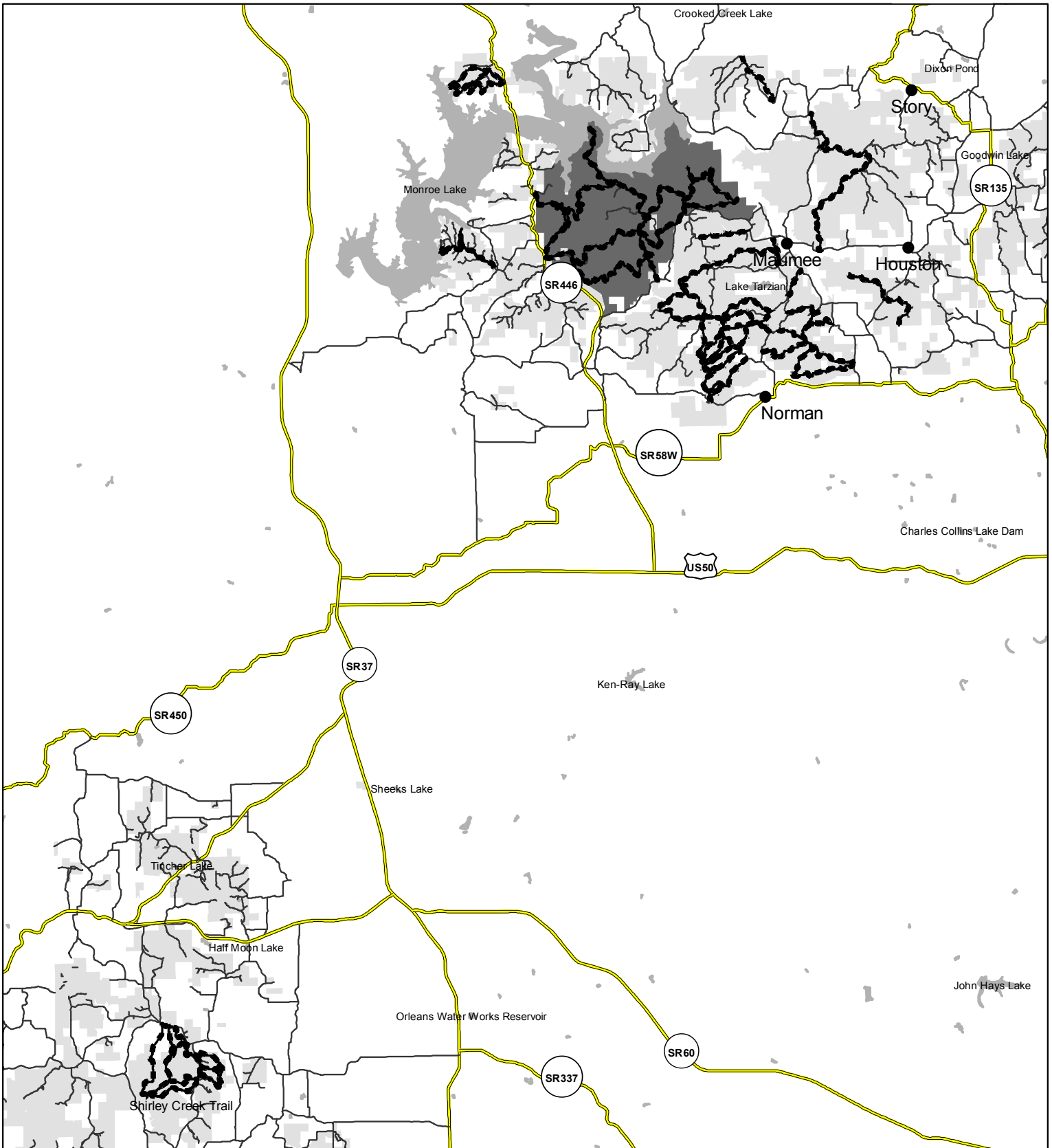


TRAILS CLOSURE ORDER NO. 09-12-19-015



Updated 6/2019

LEGEND

- CLOSED Trails
- Town
- Highway
- Charles C. Deam Wilderness
- FOREST SERVICE LAND
- Roads
- LAKE

Original data compiled from multiple source data and may not meet National Mapping Accuracy Standards. For specific data source information contact the Hoosier National Forest. No warranty is made to the contents or accuracy of the data. USDA is an equal opportunity provider, employer, and lender.

